

This document gives an overview how to
install the Canon Printer Image Runner II 4525 I (driver software)
in the ETS library

Author: Francesco DI BARI; April 2019



Student version and for internal use only

I. Introduction..... 3

II. Which and how to download the Driver of the Printer 4

III. Installation of the Driver: Step by Step..... 4

IV. Save your Credentials into the Settings..... 8

V. What to do IF 10

I. Introduction

This document covers the installation on Windows X32 or X64 only:

- I. Which and how to download the driver of the printer?
- II. Installation of the driver: Step by step
- III. Saving of the student's credentials (login) into the settings
- IV. What to do IF ...

This document doesn't cover the installation of Mac OS systems or Linux OS. It also doesn't provide any troubleshooting.¹

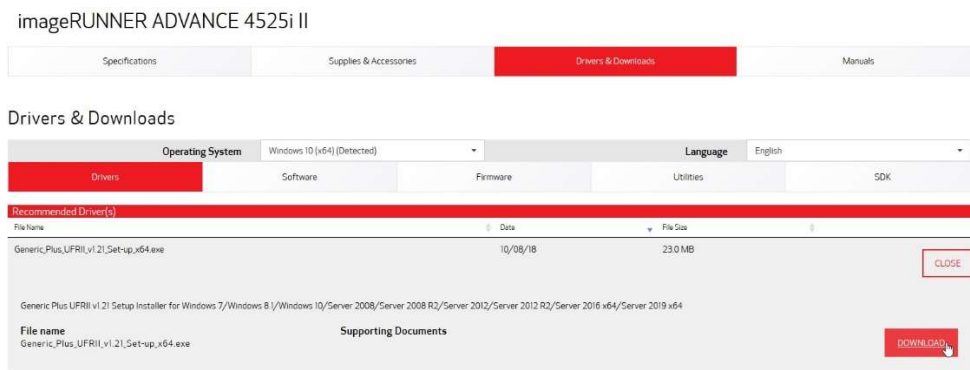
¹ Questions or troubleshoots can be addressed to Otniel Pesel: Otniel.Pesel@ets-kniebis.de

II. Which and how to download the Driver of the Printer

Connect to the internet and go to the driver page;

https://www.usa.canon.com/internet/portal/us/home/support/details/copiers-mfps-fax-machines/multifunction-copiers/imagerunner-advance-4525i-ii?tab=drivers_downloads .

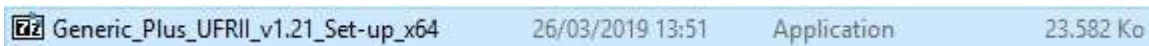
The official page of Canon will appear, and the page will start scanning your computer. After the process, the software will propose a driver that is compatible with your device. Note that this driver appears in the section **RECOMMENDED**.



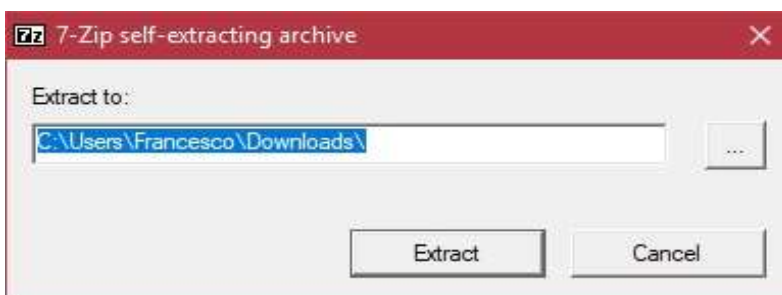
You have to refer to this section and to click on *download*. To get the download button, you have to first click on *select*.

III. Installation of the Driver: Step by Step

After downloading the driver, the software should appear in your download folder compressed into a 7zip file. You have to double click on the zip file.



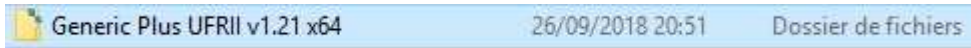
The 7zip software will extract your driver and create another file.



HOW TO INSTALL THE DRIVER OF THE ETS-LIBRARY PRINTER

Click on **EXTRACT**.

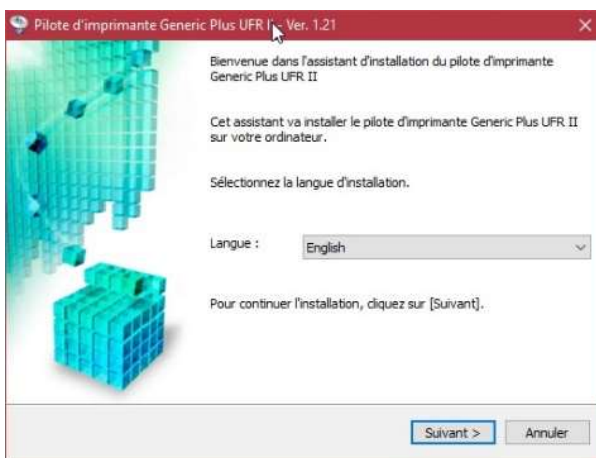
The result of the extracted 7zip file is this second file that appears at the end of the process.



Enter into the will **Generic Plus UFR II v1.21 x64** and go to the setup file.

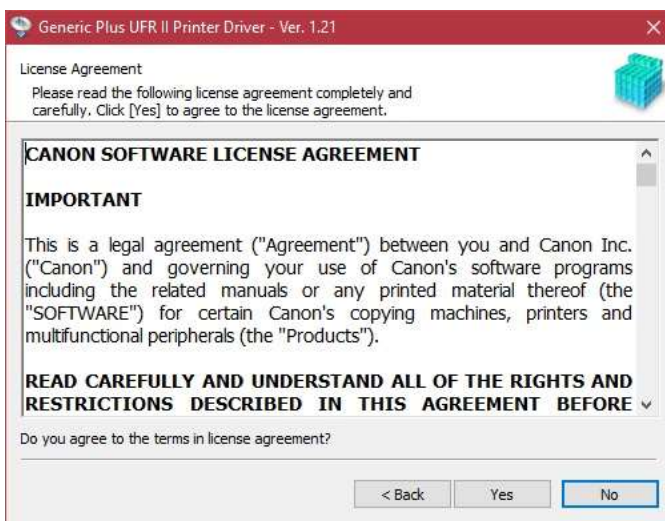


Double click on the setup file to start installing the driver

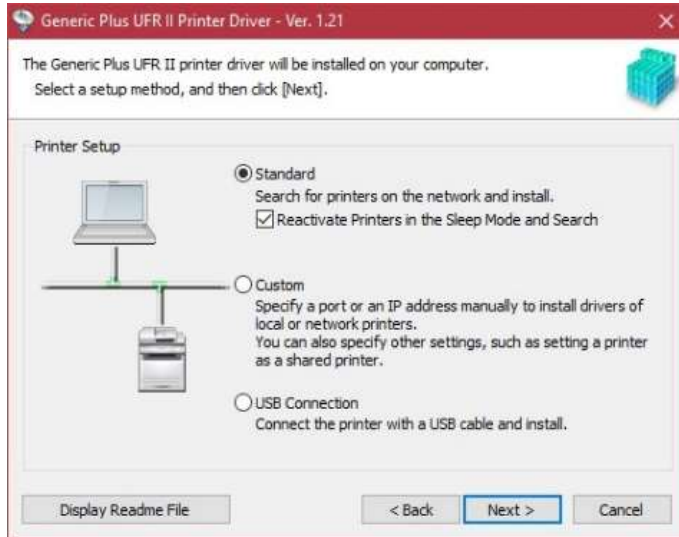


The installation starts by opening these windows. Click on *Next*.

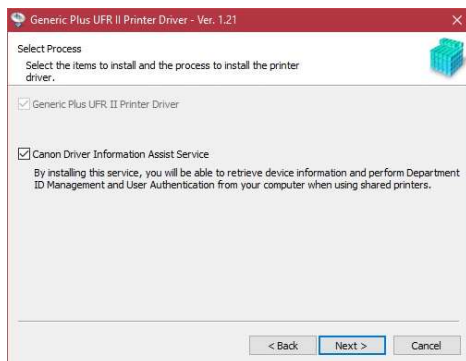
Accept the Software Licence Agreement by clicking on *YES*.



Choose the option Standard and be careful to choose the option *Reactivate Printers in the Sleep Mode and Search*.



In the next following windows be careful to choose the option *Canon Driver Information Assist Service*. This option will allow you to use your credentials.



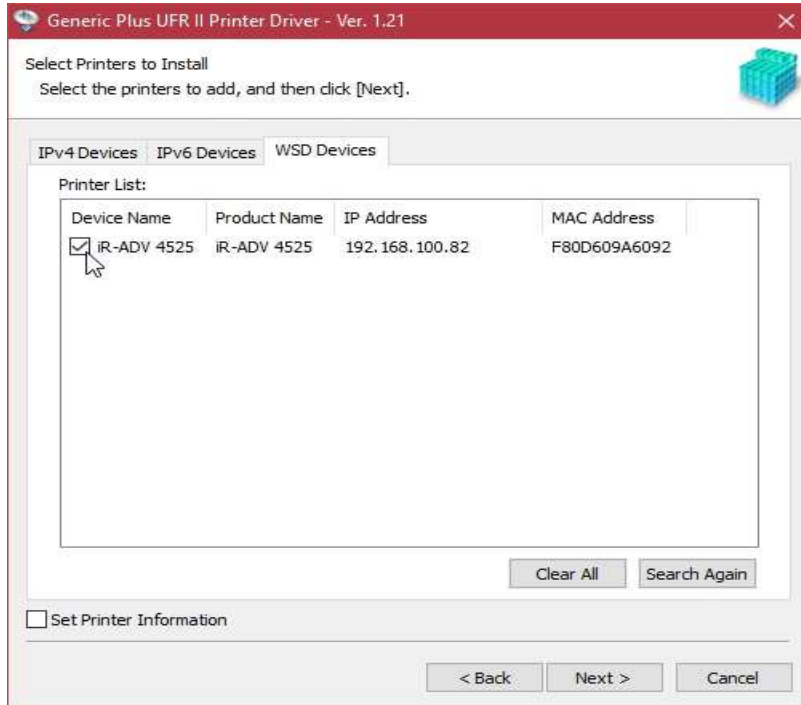
You have to allow your firewall to enable the connection. If you get the following WARNING information, you have to click on YES.



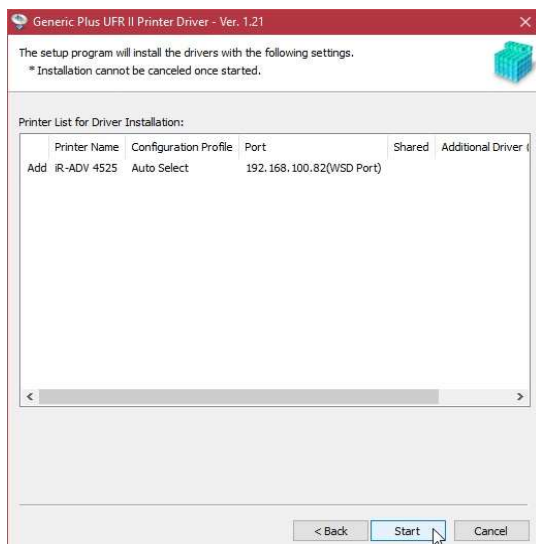
HOW TO INSTALL THE DRIVER OF THE ETS-LIBRARY PRINTER

The driver is searching for the appropriate printer. You have to go on the tab *IPv4 Devices* or *WSD Devices*. The printer details are as following:

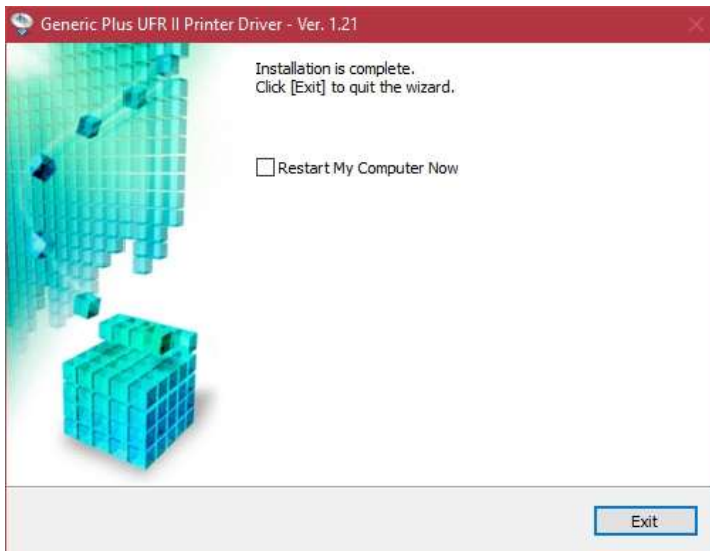
iR-ADV 4525 with the Ip Adresse: 192.168.100.82



Select the printer than confirm your choice by clicking on *start*.



When the installation executed the process, the driver will ask you to exit. Click on *Exit*. You can also restart your computer if needed.



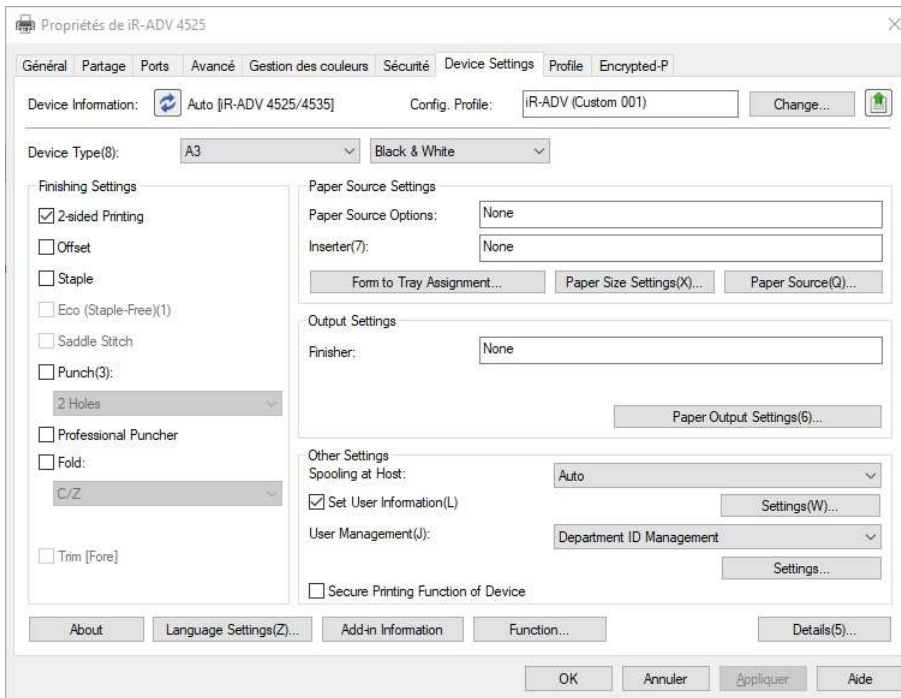
IV. Save your Credentials into the Settings

This section explains how to save your personal credentials (login data; provided by the staff of the ETS library) in the driver software so that you can print without receiving a request to type in your credentials manually and repeatedly.

To access on the printer just installed, you have to click on the settings of *Devices and Printers*. The path under windows, click on *Control Panel*, click on *All Control Panel Items*, click on *Devices and Printers*. You will see the printer Canon ImageRunner 4525.

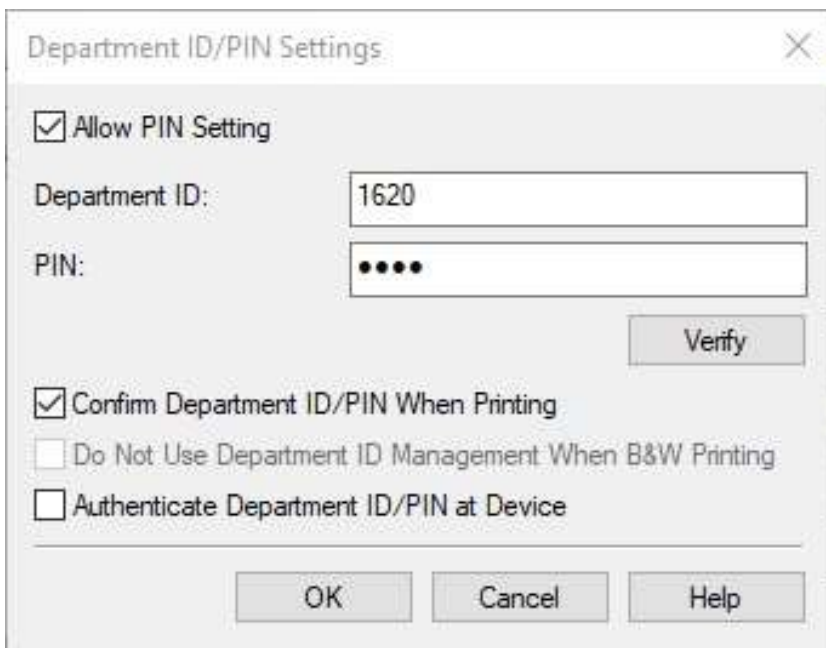
After selecting the printer with one left click of your mouse, do a right click on the selected printer and choose Printer Properties.

A window of settings will appear. At the top of the window are some taps. Choose the tap *Device Settings*.



The windows change the interface and show the settings regarding the tap Device Settings. Choose the Settings under User Management in the section Other Settings button.

A second window, **Department-ID/Password**, appears upper the first window. To activate the registration, choose the field *Allow PIN Setting*.



Insert your personal **credentials** in the following fields: *Department-ID and PIN*. After you inserted **your credentials**, click on *Verify*. A **third window** will appear **informing you about your account**.

Take note about this information, if you have entered **your credentials correctly**. The **third window confirms your credentials**. Then click on *OK*, and *OK* for the second Window and *OK* on the first Window.

Your credentials are now saved in your device. Printing is now directly possible without typing in your credentials every time you want to print.

V. What to do IF ...

If you are unable to install the driver on your device, or you encounter a different issue, please see a staff member in the **ETS library**. You will find a computer where **you can make your printouts via the Canon ImageRunner 4525**. Note **that in this case, that you will be asked for your personal credentials** to be able to print.